



## Falcon Mega Track™ - Ship Security Alert System (FMT-SSAS-V2)

ISatDataPro Satellite Service by Inmarsat, Utilized with IDP-800 Terminal, provides **ULTIMATE Tracking Reliability and Versatile Tracking Features; Integrated with Falcon Mega Track™**

- ✓ **ULTIMATE Choice for Marine SSAS & Tracking;**
- ✓ **Secure HTTP Web Log-In;** 
- ✓ **Backup with Internal Rechargeable Batteries**
- ✓ **Track by Distance™ Software Loaded;**



### Overview

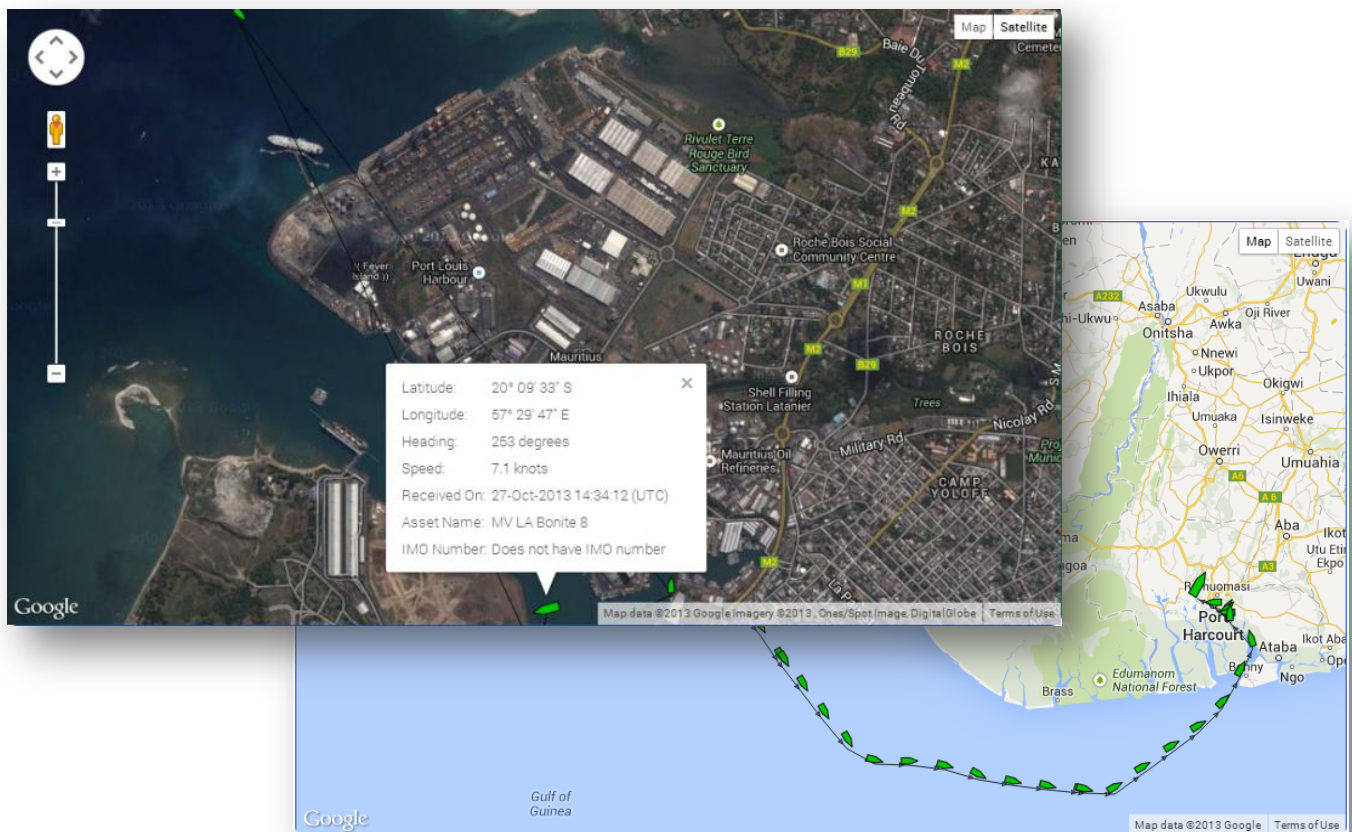
FMT-SSAS-V2 device consists of a satellite transceiver with integral GPS receiver and Internal Battery Backup. In normal operation the transceiver sends periodic position reports to the Falcon Mega Solutions system, which are delivered to the customer's, desired email/SMS addresses. FMT-SSAS-V2 has slim profile for easy and secrete installation onboard the variety marine assets including Large Vessel to Small Boats, from Offshore Units to Offshore supply vessels, and form Harbor Tugs to River Barges; while lowering operational costs.

Secure HTTP encryption and password-protected identification ensure that sensitive data remains safe. FMT-SSAS-V2 satellite terminal allows pinpointing exact location, speed, and heading of vessel. It can poll location on demand and change position reporting anytime. Full tracking control is in customers own hands.



# Key Benefits

- » Inmarsat Type Approve, CE Mark, FCC & IC; Perfect for harsh marine environment.
- » Global Coverage of Inmarsat ISatDataPro, truly Satellite based service.
- » Rechargeable batteries with built-in charger.
- » Extremely Low Power Consumption.
- » Very Quick Installation; Quick Activation; can be used immediately after installation.
- » A Secure Service, access by Hypertext Transfer Protocol Secure (HTTPS) web servers.
- » User Friendly Web Interface for easy control of the Tracking Device.
- » Simple SSAS Testing; No coordination is required between vessel and office to do SSAS Test.
- » Position updates with Map by email on PC or Smart Phone, SMS Update for non-Smart Phone.
- » Speed, Average Speed, and Distance Moved from the last position.
- » Credit based payment system for budget management.
- » Batteries life target of 30 days at 15 minute reporting. Much more with low reporting frequency.
- » Simple and easy cost control system. Online usage report for usage analysis.
- » Geo-Fencing Alerts and Notifications.
- » Distance and Bearing from 5 nearest Ports. Proximity (City, Port or Land Mark).
- » Track history for voyage analysis (2 Years).
- » Astronomical Calculations e.g. Sun Rise, Sun Set, Dawn, Solar Noon, Dusk, Day Light Period, Night Period.
- » Global Weather Information and Forecasting.
- » Falcon Mega Solutions is the innovator of "Track by Distance" feature. The vessel sends the position reports when set distance is travelled, which is really a true tracking of a vessel.
- » (and Much more)



# Application



## Marine SSAS & Tracking – Ocean Going Vessels

Tracking solution for powered vessels



## Marine SSAS & Tracking – Passenger Vessels

Tracking solution for powered vessels



## Marine SSAS & Tracking - Offshore Vessels

Tracking of Offshore vessels e.g. Rigs, Barges, Anchor Handling Vessels, Supply Vessels, Tugs and Boats



## Fishing Boats SSAS & Tracking

Tracking solution for fishing boats



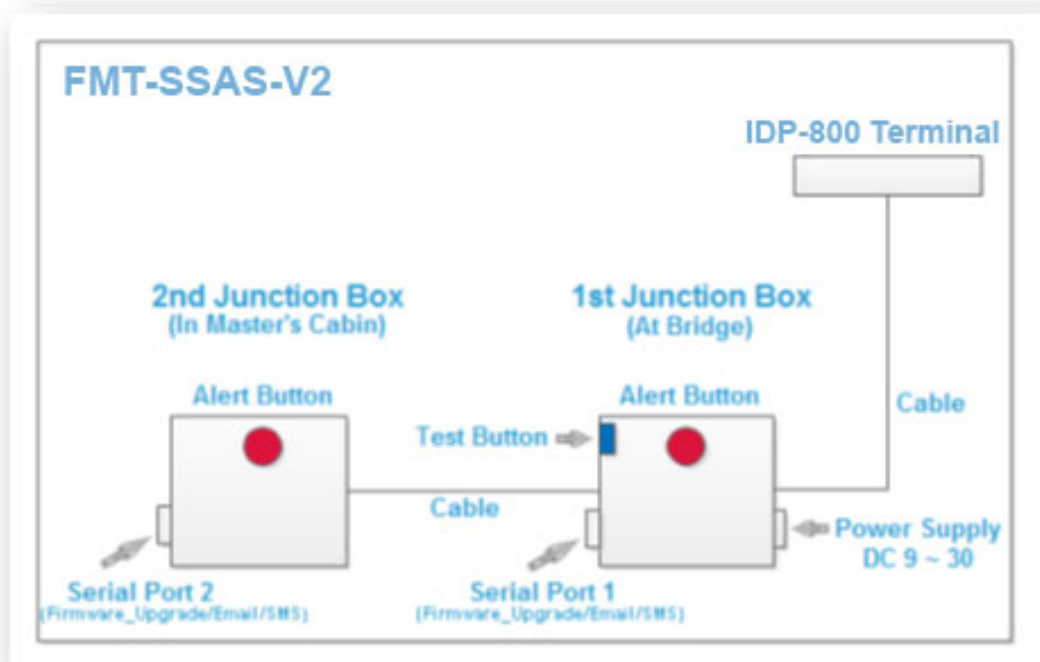
## Leisure Boat SSAS & Tracking

Tracking solution for Leisure/Pleasure Boat



## Tracking Application

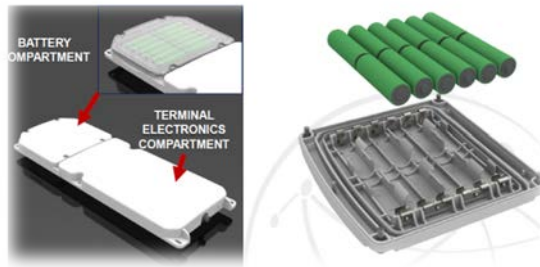
Secured tracking online web application for managing assets, tracking assets with online maps and monitoring historical data. Getting instance asset's position. Email and SMS notification alerts.





# Hardware Specification

<b>General</b>		<b>Transceiver</b>	
<b>Make:</b>	SkyWave Communication	<b>Certification:</b>	CE, FCC & IC
<b>Model:</b>	IDP-800	<b>Satellite:</b>	Two-way, ISatData Pro Satellite Service
<b>Mass:</b>	1.3 Kg	<b>Coverage:</b>	Global
<b>Electrical</b>		<b>Elevation Angle:</b>	+20 to +90 Deg
<b>Input Voltage:</b>	9 to 30V DC	<b>EIRP:</b>	7.0 dBW
<b>Power Consumption:</b>	Rx: 8.3 mA; w/GPS: 40 mA Tx: 0.75 A; Sleep: 100 µA	<b>GPS Acquisition Time:</b>	27 Sec (Cold Start-typical)
<b>Environmental</b>		<b>GPS Accuracy:</b>	2.5m (CEP)
<b>Operating Temp:</b>	-10C to +50C	<b>GPS Sensitivity:</b>	Tracking: -159dBm
<b>Dust/Water Ingress:</b>	IP67	<b>Charging</b>	
<b>Vibration/Shock:</b>	SAE J1455 / MIL-STD-810G	<b>Current:</b>	1.33A (at 12V)
		<b>Time:</b>	4 hours (maximum)
		<b>Temperature:</b>	0°C to 45°C



## Coverage Map

